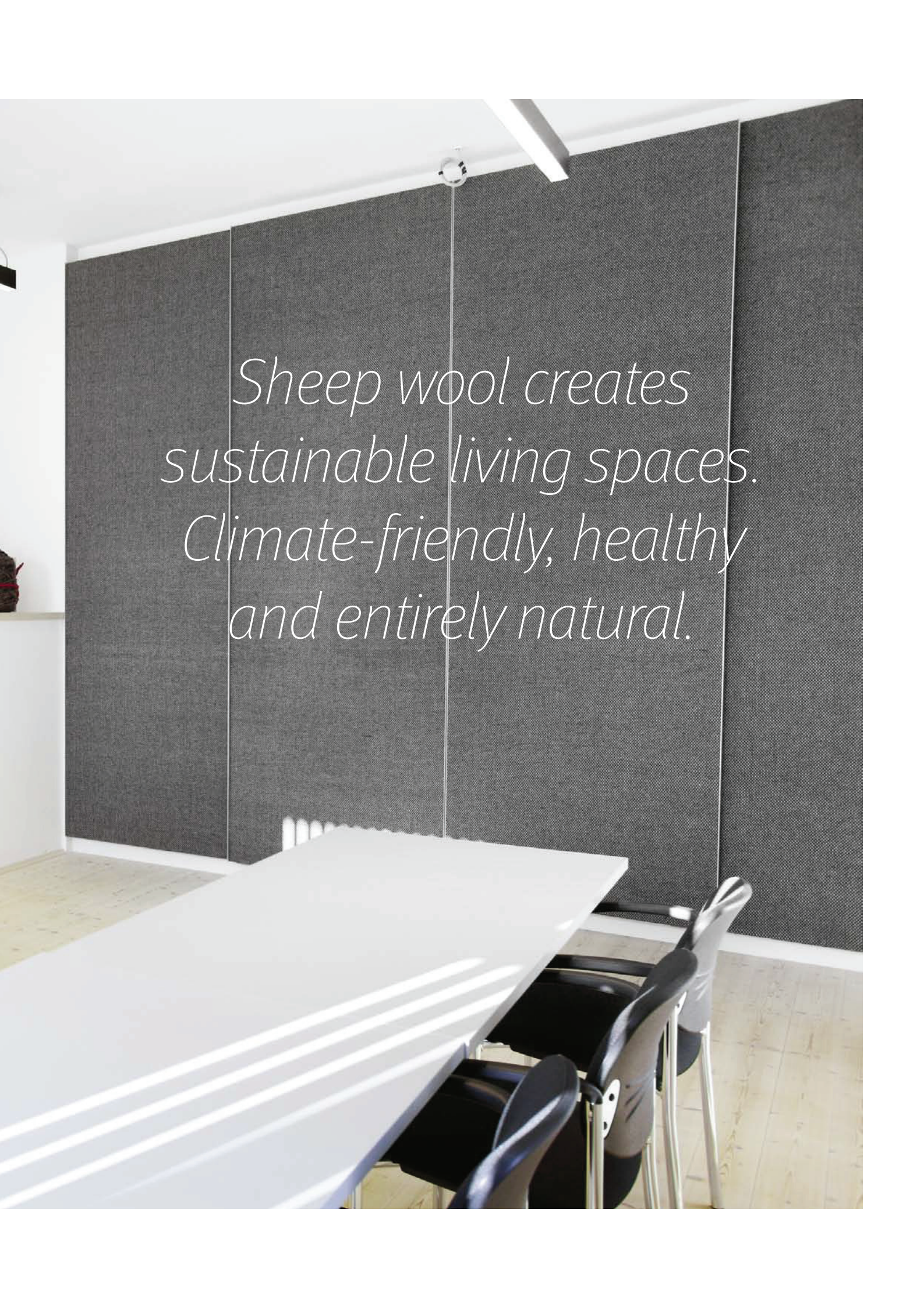


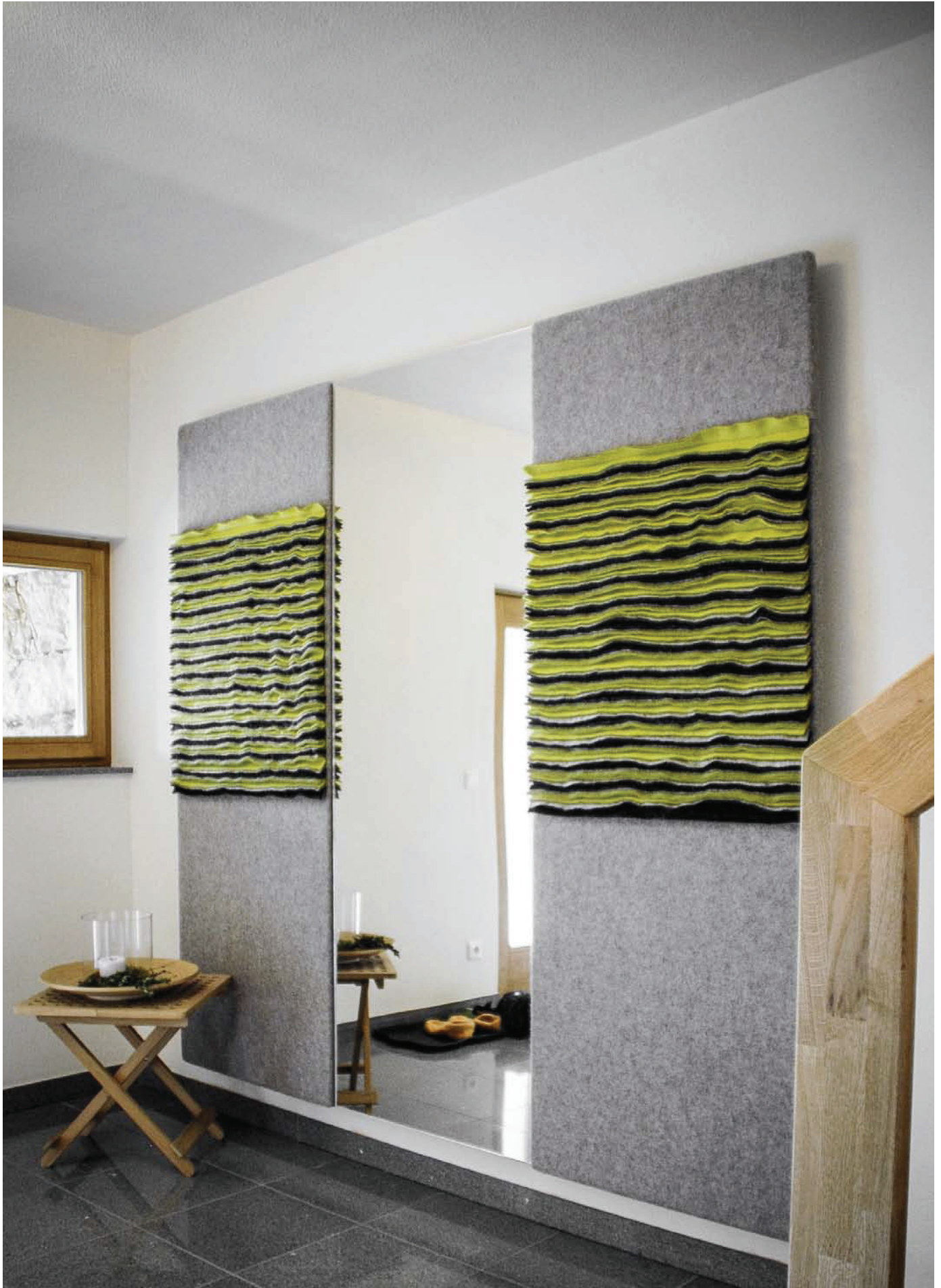
Silentum

ACOUSTIC FELTS





*Sheep wool creates
sustainable living spaces.
Climate-friendly, healthy
and entirely natural.*



Natural sense of well-being. With Silentum acoustic felts.

Improve room air.

Sheep wool has the unique ability to filter and sustainably neutralize pollutants and irritants from the air. This creates the prerequisites for a comfortable and healthy indoor climate in living and working spaces. The air cleaning function of *Silentum acoustic felts* is permanently maintained.

Feel the sustainability.

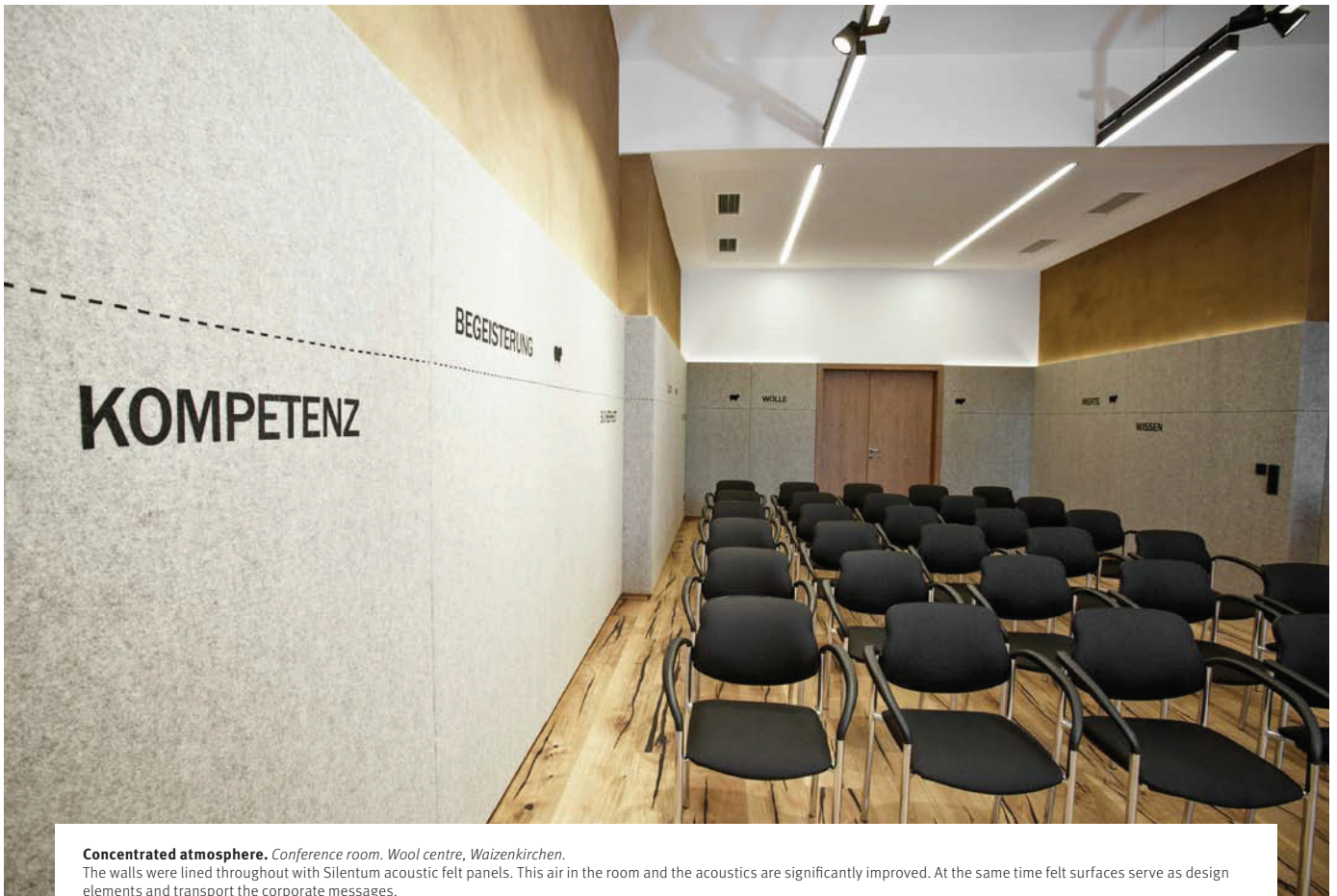
Silentum acoustic felts are made from pure new sheep wool. This highest quality and sustainability is guaranteed. Sheep wool as a renewable resource makes a positive contribution to environmental protection. The careful processing of the natural product contributes to a perceptibly pleasant indoor climate.

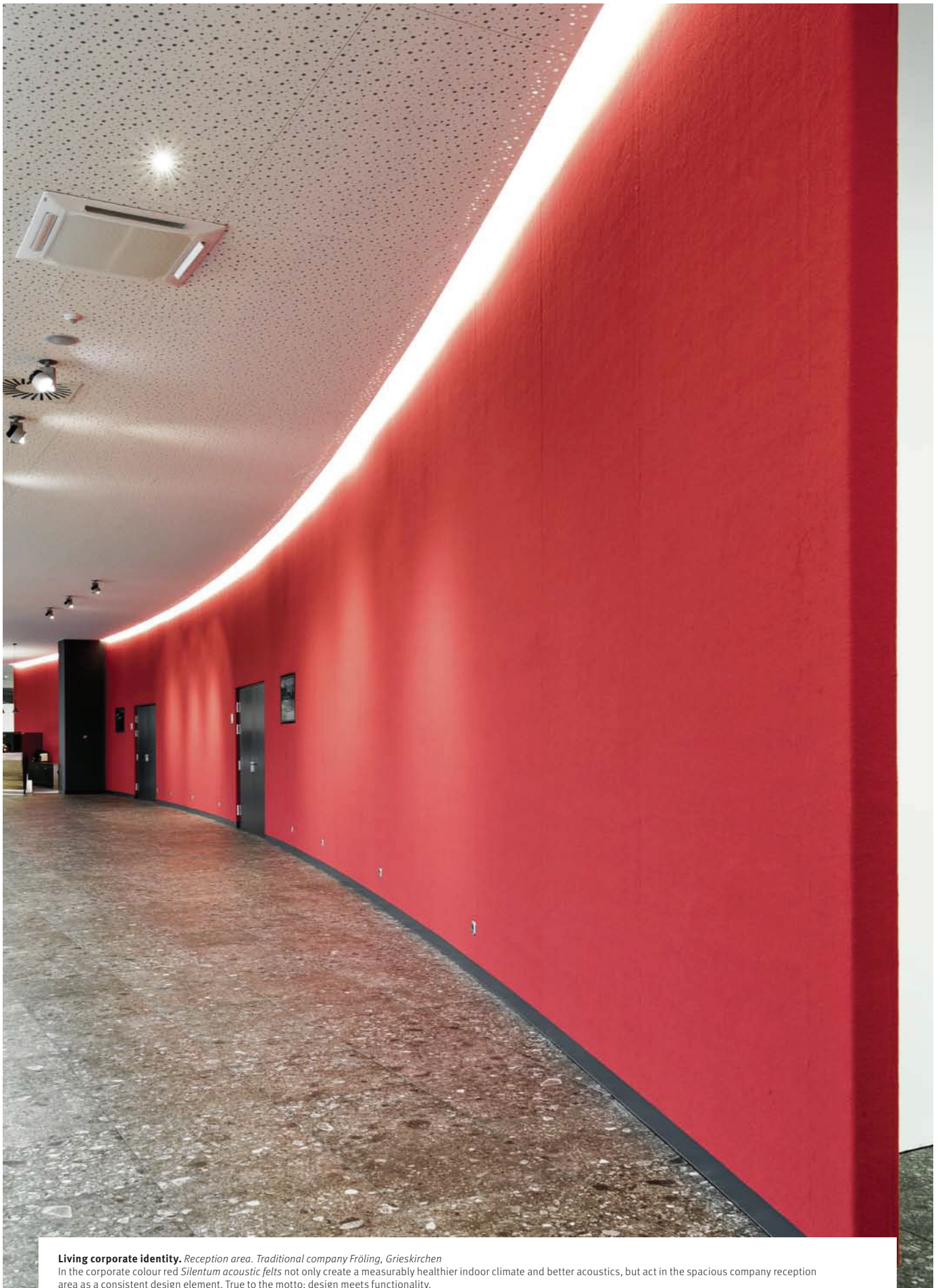
Refine acoustics.

Silentum acoustic felts audibly improve the acoustics in the room due to the sound-absorbing property of the wool. Reverberation times are reduced, disturbing and unpleasant noises in low or very high tones are cushioned. The rooms radiate calmness and concentration, and increase the sense of well-being.

Design living spaces.

With a large variety of colors and most diverse combinations *Silentum acoustic felts* offer almost limitless design variations: From design element up to entire surfaces. Available in elegant shades such as grey or beige as well as bold, bright colours they can be optimally used in living and working spaces.





Living corporate identity. Reception area. Traditional company Fröling, Grieskirchen

In the corporate colour red *Silentum acoustic felts* not only create a measurably healthier indoor climate and better acoustics, but act in the spacious company reception area as a consistent design element. True to the motto: design meets functionality.



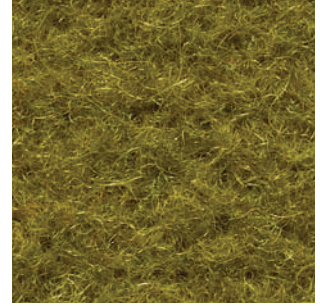
TU 10 Turquoise

Silentum
ACOUSTIC FELTS



GU 49 Forest green

Silentum
ACOUSTIC FELTS



GU 48 Olive green

Silentum
ACOUSTIC FELTS



BR 46 Beige brown

Silentum
ACOUSTIC FELTS



BR 47 Dark beige

Silentum
ACOUSTIC FELTS



BR 45 Mid brown

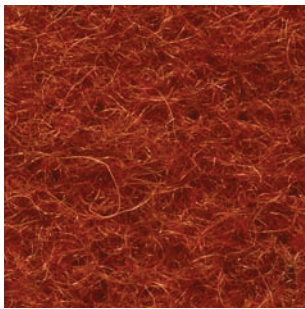
Silentum
ACOUSTIC FELTS

Trend: Colours.

Elegant grey, warm brown and stimulating red.

Silentum acoustic felt colours create a high level of comfort in any environment.

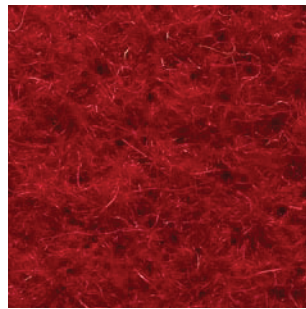
And remain timelessly beautiful.



CO 11 Copper

Silentum

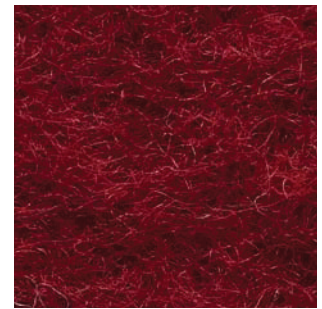
ACOUSTIC FELTS



RO 23 Carmine red

Silentum

ACOUSTIC FELTS



RO 24 Bordeaux red

Silentum

ACOUSTIC FELTS



GR 26 Light grey

Silentum

ACOUSTIC FELTS



GR 29 Anthracite

Silentum

ACOUSTIC FELTS



GR 28 Black

Silentum

ACOUSTIC FELTS

The natural base material sheep wool is also reflected in the Silentum acoustic felt colour selection that offers a high level of design flexibility with twelve colours*. The colour collection ranges from vibrant colours like crimson, turquoise and carmine red to muted colours like beige, forest green or dark brown. In addition, neutral colours such as grey and anthracite fit elegantly in any environment.

*Due to the natural sheep wool material slight colour variations are possible.

The multiplicity of *Silentum* acoustic felts.

Design meets functionality.

Silentum acoustic felts combine design with wide-ranging functionality. In offices and schools they provide a quiet working environment that has a positive effect on concentration and learning. The bright colours also create a cheerful learning and play atmosphere in multi-purpose rooms and nurseries. Whether used as a sound-absorbing decorative feature or applied as felt to furniture surfaces: *Silentum acoustic felts* combine health, function and harmonious design.

Easily applied.

The clever modular system, which was developed in cooperation with architects, enables *Silentum acoustic felts* to be easily applied. The combination of individual elements enables individual wall effects in various different colours and forms.

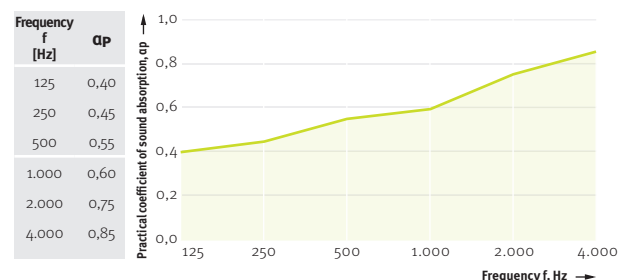
Used as a pin-board they optimize the indoor climate in a simple, functional way. Ideal for schools, recreational rooms and nurseries.

Soundproofing.

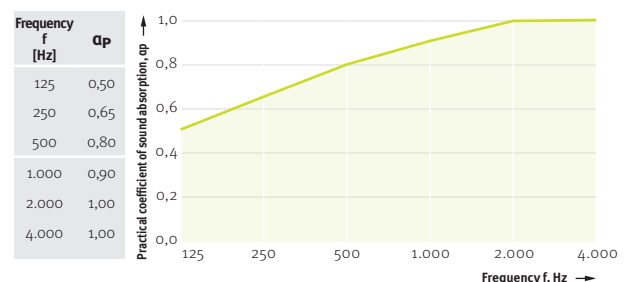
The sound absorbing properties of *Silentum* acoustic felt arise from its construction. Despite the very high density of 100 kg / m^3 (= mass), the felt remains porous and pliable. This means that sound waves can penetrate and are not reflected from the surface. Sound waves of different frequencies are broken up many times within the layers of felt, lose their energy and are absorbed.

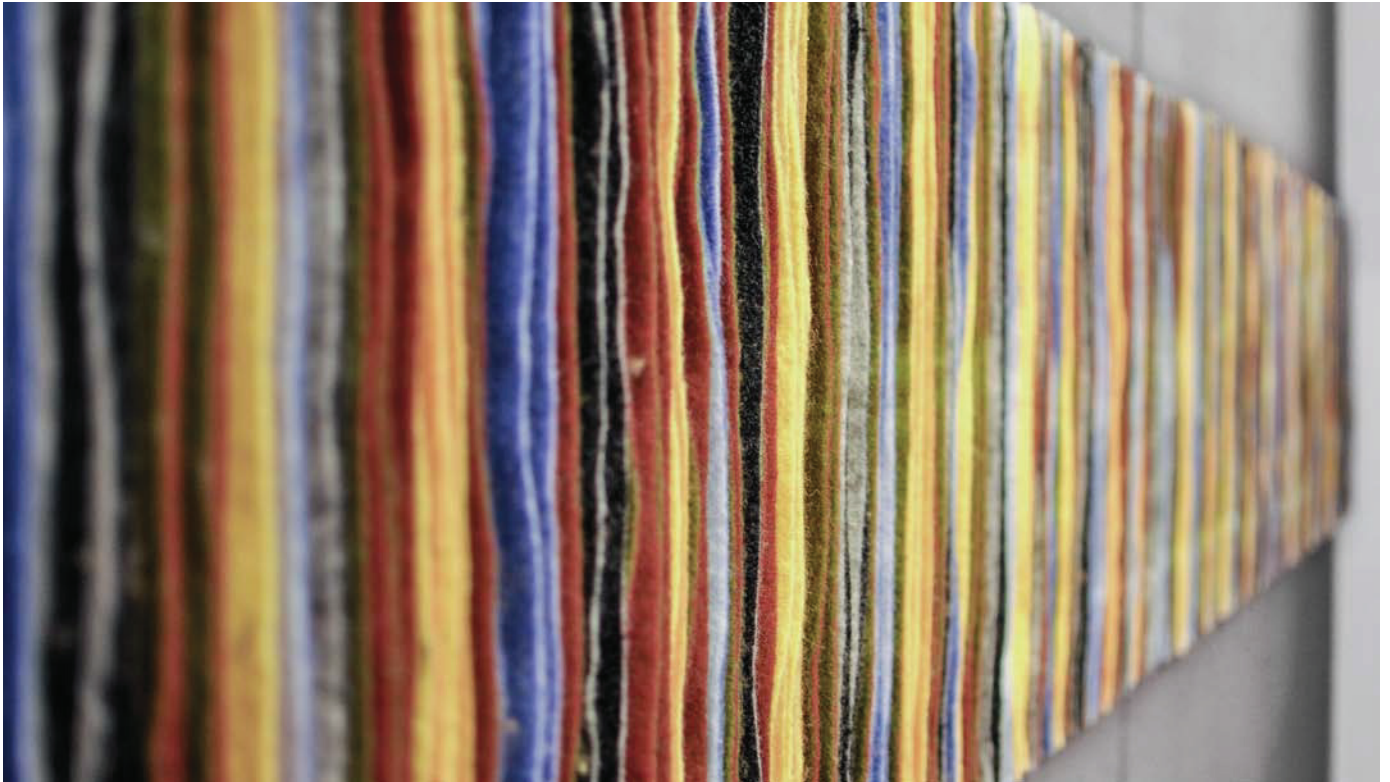
Technical data: The sound absorption performance according to the Austrian standard ISO 11654 for acoustic sheep wool felt is $\alpha_w = 0.60$ (H) and for acoustic sheep wool felt with lamella $\alpha_w = 0.85$ (H). Certified wool protection: IONIC PROTECT®

Acoustic sheep wool felt



Acoustic sheep wool with lamella





Air filter.

The basic building block protein of sheep wool is keratin. The molecules of the amino acid side branches are capable of absorbing and neutralizing harmful substances such as formaldehyde. This is the result of a chemical reaction wherein the pollutants are bound or converted by these molecules.



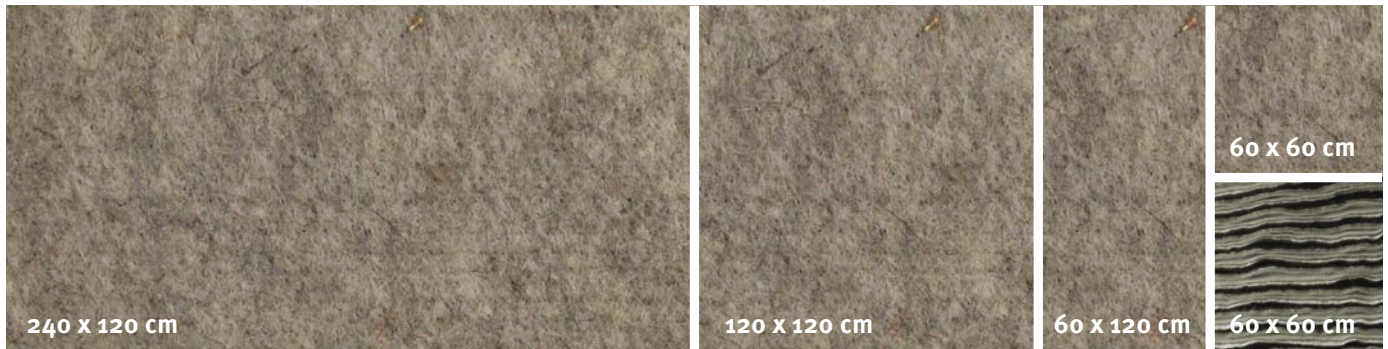
Fire protection.

Sheep wool has a very high flash point with a self-ignition temperature of between 560 and 600 °C. As a result *Silentum acoustic felts* offer the highest degree of safety in all areas of use. This eliminates the need for additional fire retardants and means that no toxic gases are given off in the event of a fire.

Classification according to **European standard EN 13501-1: C - s2 do**

Regional origin.

Sheep wool for *Silentum acoustic felts* originates from sheep reared in Austria, Germany and Switzerland. Using raw materials from the region makes a significant contribution to climate protection and sustainability.



*As acoustic felt lamella
or as a modular system.*

Silentum acoustic felt

Height: 9 mm, delivered per linear metre,
roll width: 150 cm

Silentum pin-board panels

(w x l, sizes in cm)

Height: 36 mm (incl. felt)

Portrait: 120 x 240 / 4 mounting rails

Portrait: 60 x 120 / 4 mounting rails

Landscape: 240 x 120 / 4 mounting rails

Landscape: 120 x 60 / 4 mounting rails

Square: 120 x 120 / 2 mounting rails

Square: 60 x 60 / 2 mounting rails

Silentum acoustic lamella felt

Height: 9 mm + lamella,
Delivered per square metre

Silentum lamella panels

(w x l, sizes in cm)

Height: 39,5 mm (incl. lamella)

Lamella vertical: 120 x 120 / 2 mounting rails

Lamella vertical (landscape): 120 x 60 / 4 mounting rails

Lamella vertical: 60 x 60 / 2 mounting rails

Lamella horizontal: 120 x 120 / 2 mounting rails

Lamella horizontal (landscape): 120 x 60 / 4 mounting rails

Lamella horizontal: 60 x 60 / 2 mounting rails

Delivery times.

Silentum acoustic felt is available from stock.

The delivery time for pin-board panels and lamella panels is two weeks from receipt of the order.

Custom made to measure.

Lamella are available in all twelve standard colours, the colour sequence is limitless (for example: Basic colour BR 45, lamella colour BR 45, BR 46, TU 12, CO 11/BR 45).

Vertical and horizontal lamella are each available in lengths up to 120 cm. Acoustic lamella felts are only available in rectangular shapes. Acoustic felts with lamella part surfaces can be made individually according to design.

Custom colours on request.

Custom colours are possible for the acoustic felt from an area of 150 m². The entire production batch is delivered and invoiced.

Cost basis.

Lamella are charged per square metre. Each lamella extends from panel edge to panel edge (maximum length: 120 cm). Acoustic felt is charged per linear meter. Any possible offcuts are included in the delivery.

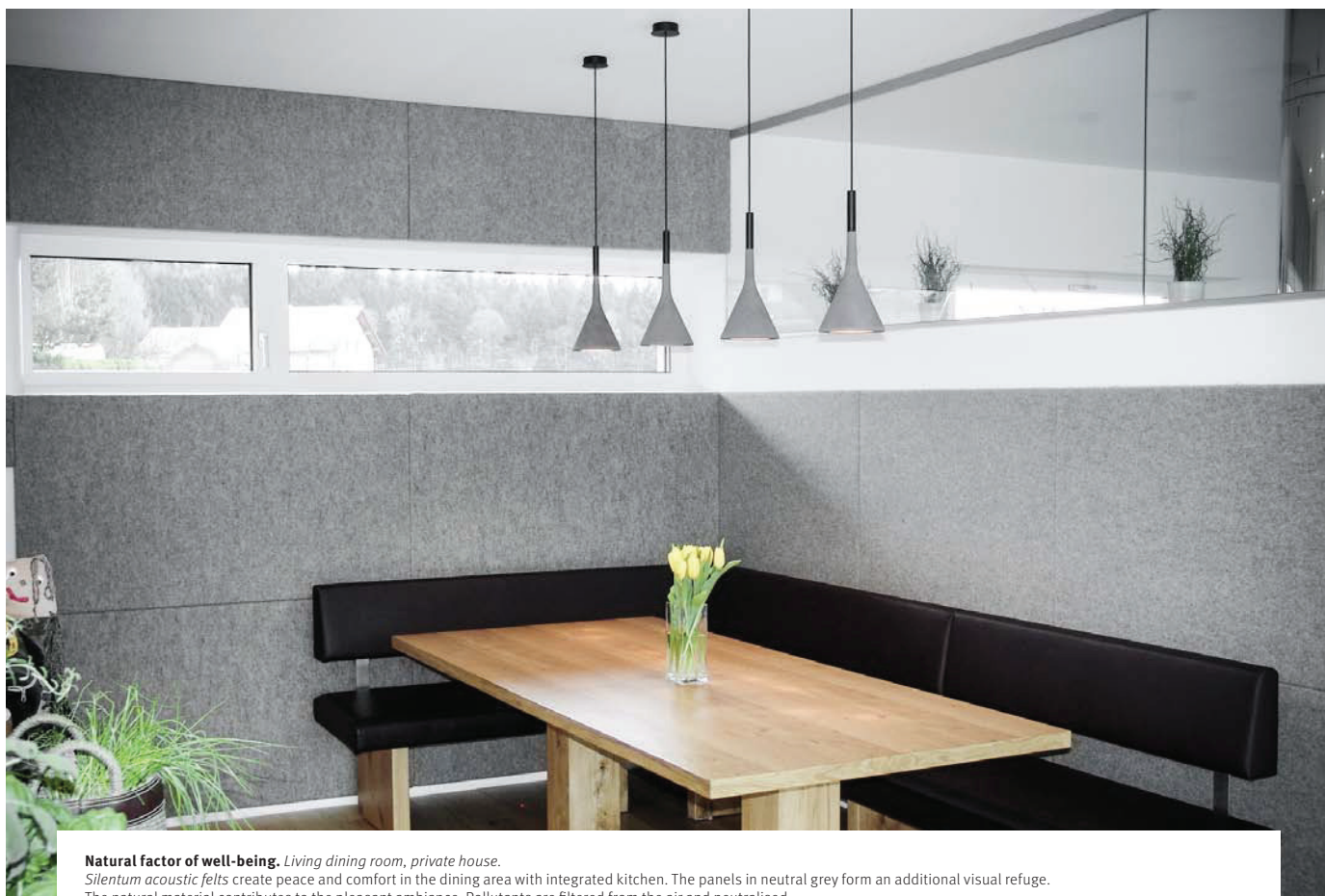
Easy cleaning.

Sheep's wool is naturally stain-resistant. The lanolin content of the wool and the density of the material prevents the penetration of dirt and liquids. Light soiling such as dust can be removed by suction. A damp cloth can be used to remove tougher dirt and contamination.

Flexible processing.

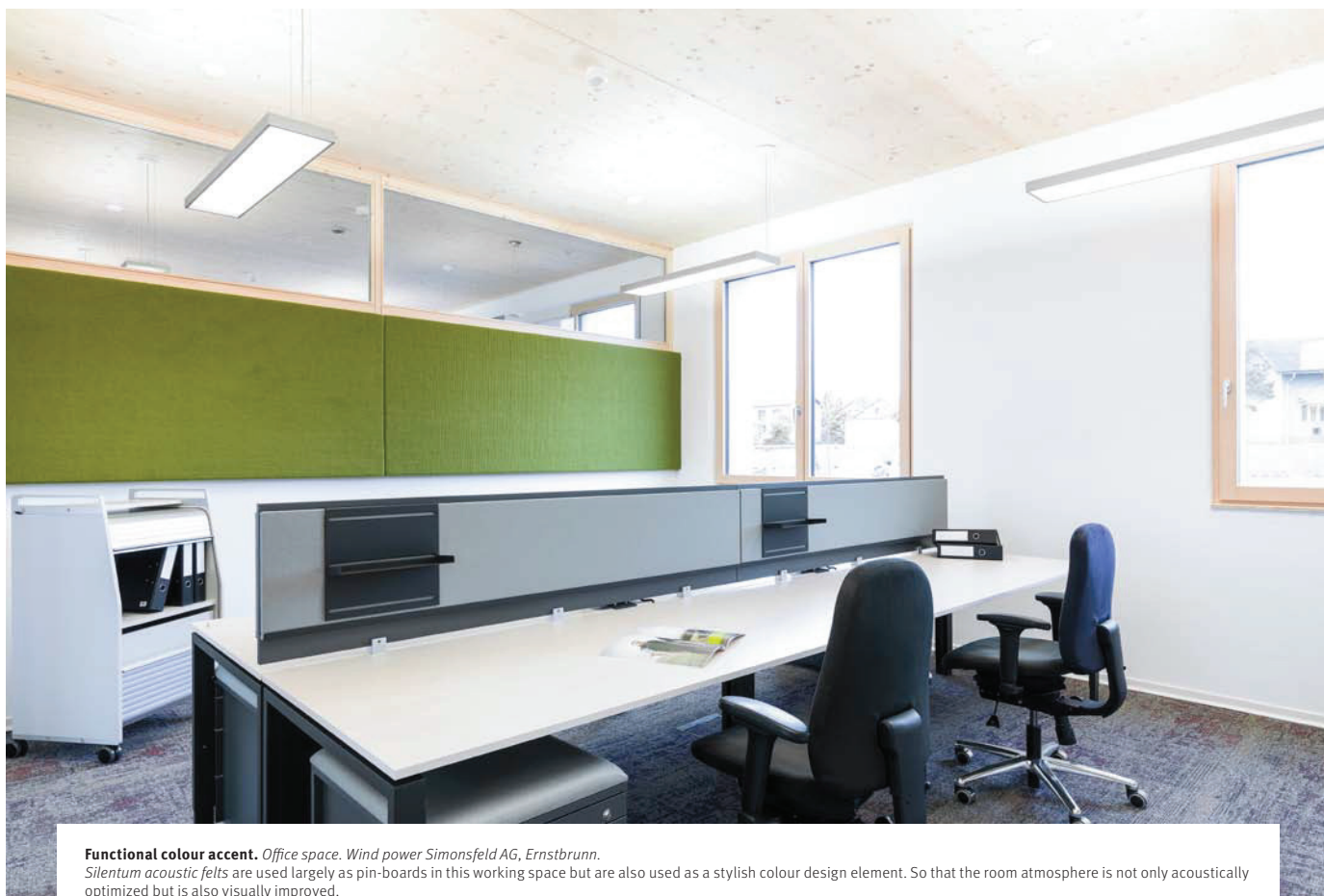
Silentum acoustic felts are easily to disguise the chosen material, for example wood panels. The finished wallpapered elements can be fitted in the room design without great difficulty.





Natural factor of well-being. *Living dining room, private house.*

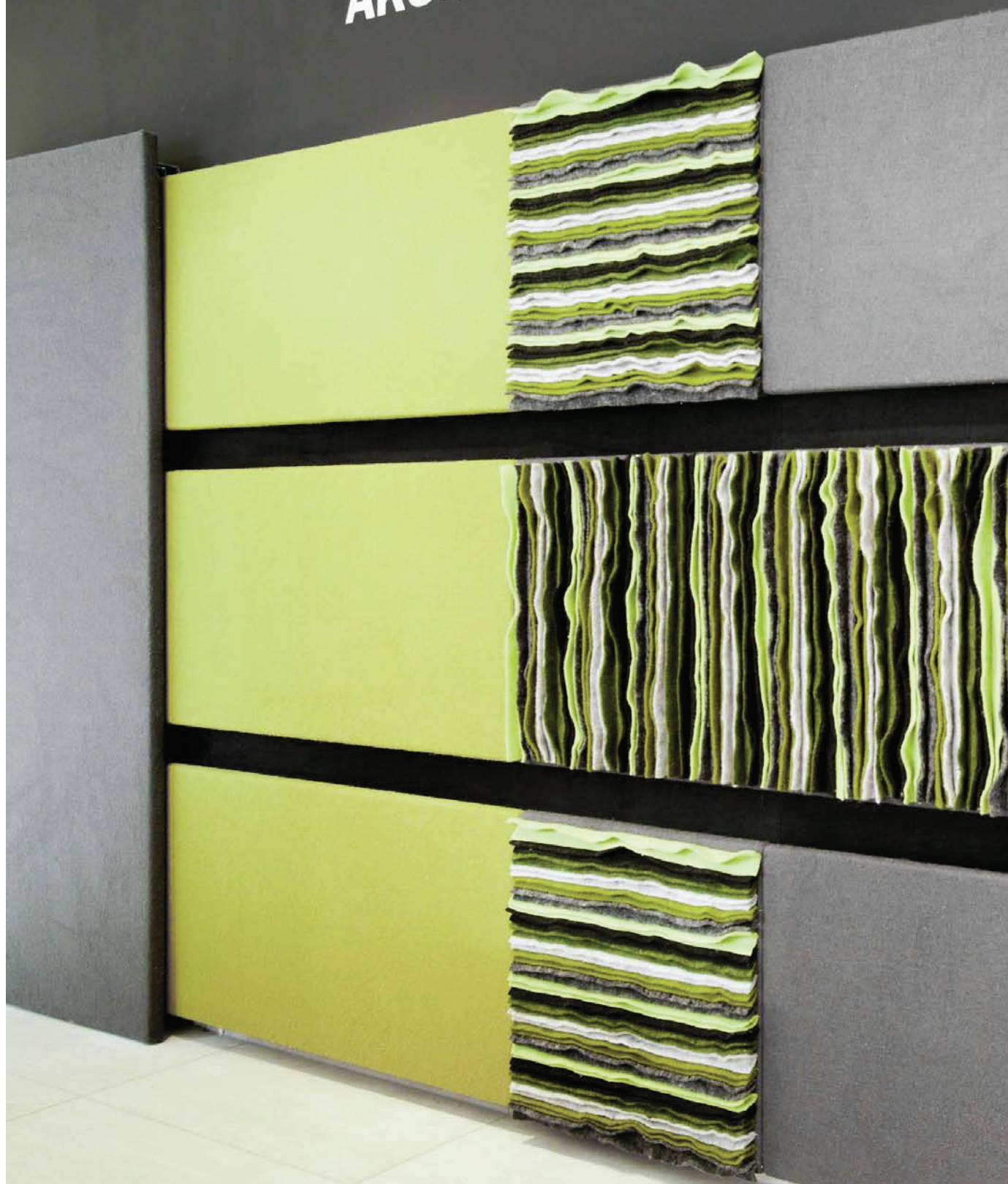
Silentum acoustic felts create peace and comfort in the dining area with integrated kitchen. The panels in neutral grey form an additional visual refuge. The natural material contributes to the pleasant ambiance. Pollutants are filtered from the air and neutralised.



Functional colour accent. *Office space. Wind power Simonsfeld AG, Ernstbrunn.*

Silentum acoustic felts are used largely as pin-boards in this working space but are also used as a stylish colour design element. So that the room atmosphere is not only acoustically optimized but is also visually improved.

AKUSTIK SYSTEME



Imprint: ISOLENA Naturfaservliese GmbH, Klosterstraße 20, A-4730 Waizenkirchen, www.silentum.at
Concept, layout & editorial: Prock+Prock Marktkommunikation, A-5020 Salzburg
Edition: September 2015 / Mistakes and printing errors reserved.



Dealer stamp:

Groene Bouwmaterialen
T: +31 (0) 416 531 902
www.groenebouwmaterialen.nl
info@groenebouwmaterialen.nl

Produced by ISOLENA:

Naturfaservliese GmbH

A-4730 Waizenkirchen, Klosterstrasse 20

Phone + 43 7277 2496 10, Fax DW 14

email: office@isolena.at

www.isolena.at | www.silentum.at

Silentum
ACOUSTIC FELTS