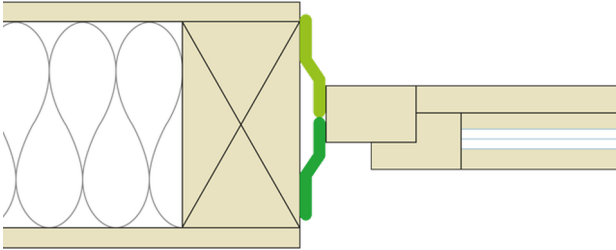


Installation steps: 1. Timber frame construction, interior



One tape only – for interior and exterior use

Sealing tape with an intelligent, humidity-variable functional membrane for joints between windows and doors and adjacent components on timber structures

- interior airtight joints to vapour check and airtight layers in accordance with DIN 4108-7, SIA 180 and RE 2020
- windtight and resistant to driving rain on the outside

A specially optimised version of CONTEGA IQ is available for masonry structures.



1. Stick the tape to the frame

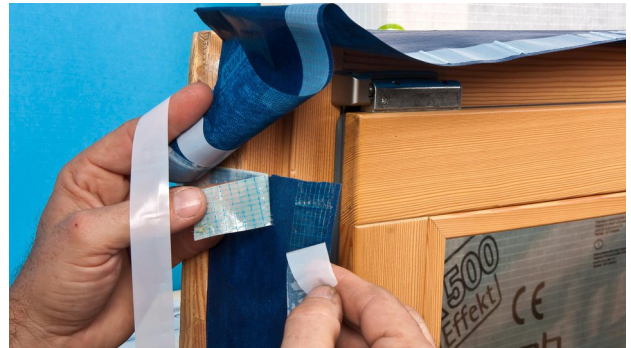
Before the window is installed, stick CONTEGA IQ onto the side of the window frame with the non-printed side facing the soffit.

Rub the tape firmly in place using the pro clima PRESSFIX application tool.



2. Corner finishing

To ensure that the tape can be simply and securely stuck to the window soffit later on, create corner folds as shown here.



3. Stick the ends

To ensure proper airtightness and/or wind sealing, stick the start and end of the CONTEGA IQ tape to each other using a strip of DUPLEX.



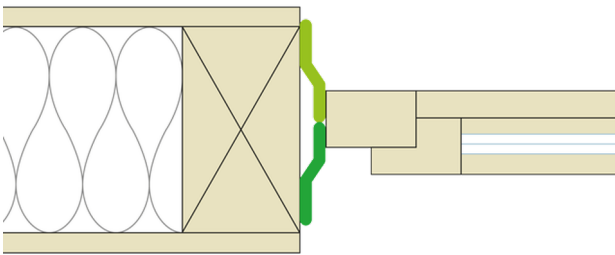
4. Stick the tape in place around the circumference of the soffit

Install the window into the soffit, then remove the release film from CONTEGA IQ and stick the tape in place around the circumference of the soffit in an airtight and / or windtight manner.

Press firmly to secure the tape in place.

Ensure that the corners created are airtight and / or windtight.

Installation steps: 2. Timber frame construction, exterior



One tape only – for interior and exterior use

Sealing tape with an intelligent, humidity-variable functional membrane for joints between windows and doors and adjacent components on timber structures

- interior airtight joints to vapour check and airtight layers in accordance with DIN 4108-7, SIA 180 and RE 2020
- windtight and resistant to driving rain on the outside

A specially optimised version of CONTEGA IQ is available for masonry structures.



1. Stick the tape to the frame

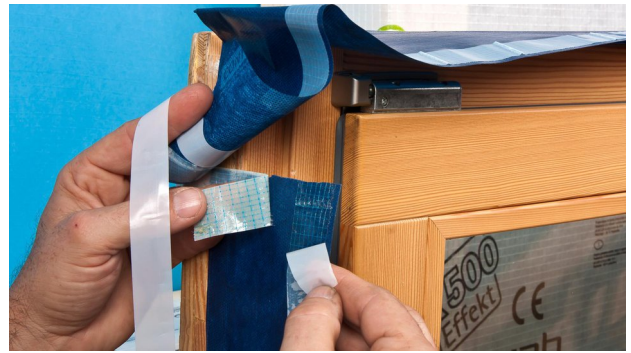
Before the window is installed, stick CONTEGA IQ onto the side of the window frame with the non-printed side facing the soffit.

Rub the tape firmly in place using the pro clima PRESSFIX application tool. Ensure that there is sufficient resistance pressure.



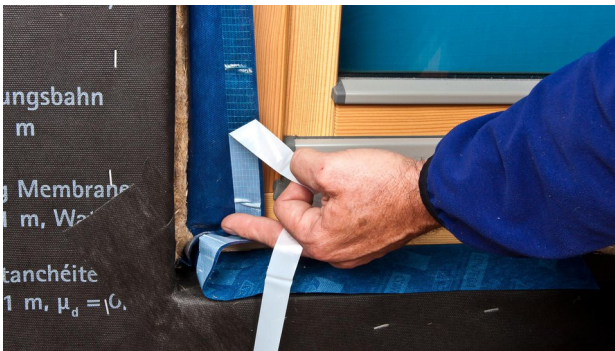
2. Corner finishing

To ensure that the tape can be simply and securely stuck to the window soffit later on, create corner folds as shown here.



3. Stick the ends

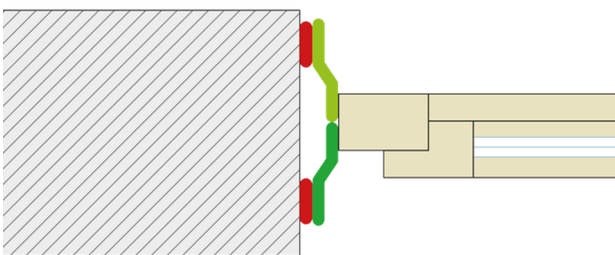
To ensure proper airtightness and/or wind sealing, stick the start and end of the CONTEGA IQ tape to each other using a strip of DUPLEX.



4. Stick the tape in place around the circumference of the soffit

Install the window into the soffit, then remove the release film from CONTEGA IQ and stick the tape in place around the circumference of the soffit in an airtight and / or windtight manner. Press firmly to secure the tape in place. Ensure that the corners created are airtight and / or windtight.

Installation steps: 3. Masonry construction, interior



One tape only – for interior and exterior use

Sealing tape with an intelligent, humidity-variable functional membrane for joints between windows and doors and adjacent components on masonry structures

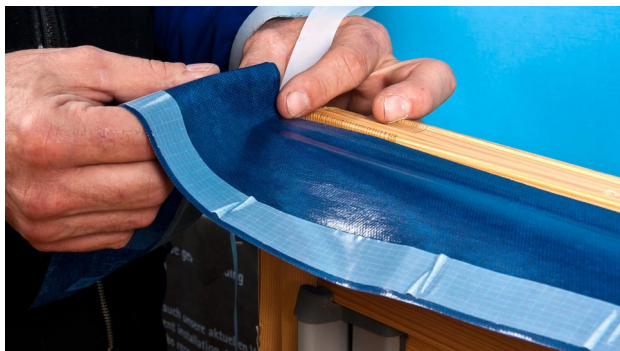
- airtight in accordance with DIN 4108-7, SIA 180 and RE 2020
- windtight and resistant to driving rain on the outside

A specially optimised version of CONTEGA IQ is available for timber structures.



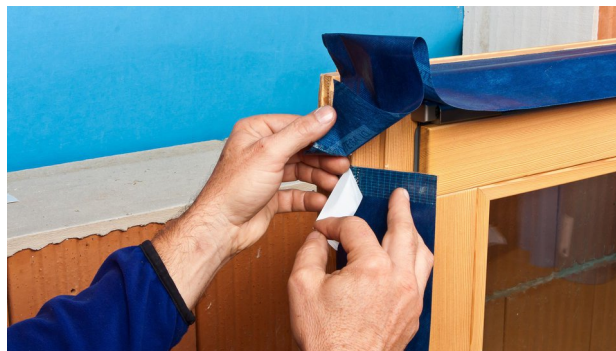
1. Stick the tape to the frame

Before the window is installed, stick CONTEGA IQ onto the side of the window frame with the non-printed side facing the soffit. Press firmly to secure the tape in place.



2. Corner finishing

To ensure that the tape can be simply and securely stuck to the window soffit later on, create corner folds as shown here.



3. Stick the ends

To ensure proper airtightness and/or wind sealing, stick the start and end of the CONTEGA IQ tape to each other using a strip of DUPLEX.

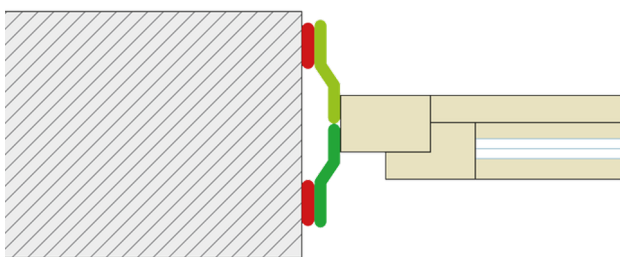


4. Stick the tape in place around the circumference of the soffit

Install the window into the soffit, apply an approx. 5 mm thick line of ORCON F joint adhesive around the circumference of the soffit in a tight zig-zag pattern, and then place the tape onto the adhesive in an airtight and/or windtight manner.

Ensure that the corners created are airtight and/or windtight.

Installation steps: 4. Masonry construction, exterior



One tape only – for interior and exterior use

Sealing tape with an intelligent, humidity-variable functional membrane for joints between windows and doors and adjacent components on masonry structures

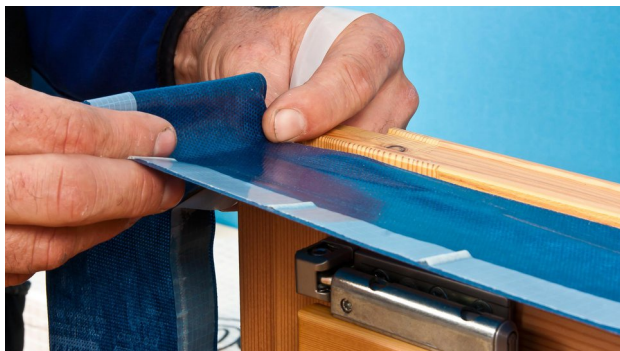
- airtight in accordance with DIN 4108-7, SIA 180 and RE 2020
- windtight and resistant to driving rain on the outside

A specially optimised version of CONTEGA IQ is available for timber structures.



1. Stick the tape to the frame

Before the window is installed, stick CONTEGA IQ onto the side of the window frame with the non-printed side facing the soffit. Press firmly to secure the tape in place.



2. Corner finishing

To ensure that the tape can be simply and securely stuck to the window soffit later on, create corner folds as shown here.

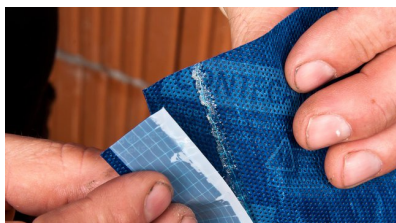


4. Stick the tape in place around the circumference of the soffit

Install the window into the soffit, apply an approx. 5 mm thick line of ORCON F joint adhesive around the circumference of the soffit in a tight zig-zag pattern, and then place the tape onto the adhesive in an airtight and/or windtight manner.

Ensure that the corners created are airtight and/or windtight.

Note



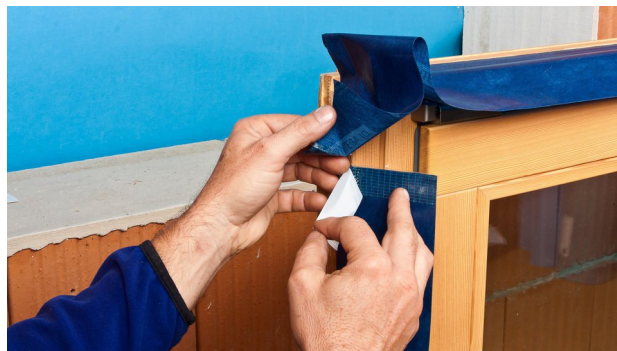
The slack included for expansion automatically becomes active if there is relative motion between building components and provides increased protection against tearing. CONTEGA IQ thus provides optimal protection against leaks that could lead to damage to structures and mould.

Substrates

Clean subsurfaces before sticking. Adhesion to frozen surfaces is not possible. There must be no water-repellent substances (e.g. grease or silicone) on materials to be bonded. The width of the adhesive tape that is to be plastered over should generally not exceed 60 mm (2 3/8") or 50% of the soffit area. Detailed recommendations can be obtained from the relevant plaster producer. Subsurfaces must be sufficiently dry and stable.

Permanent adhesion is achieved on all pro clima interior and exterior membranes, other vapour-check and airtight membranes (e.g. those made of PE, PA, PP and aluminium) as well as other roof and wall lining membranes (e.g. those made of PP and PET). Adhesion can be carried out on planed and painted wood, hard plastics, hard wood-based panels (chipboard, OSB and plywood panels). For bonding joints on masonry or concrete or on rough substrates, use ORCON F.

The best results in terms of structural stability are achieved on high-quality subsurfaces. It is your responsibility to check the suitability of the subsurface; adhesion tests are recommended in certain cases. Pretreatment with TESCON PRIMER is recommended in the case of subsurfaces with insufficient stability.



3. Stick the ends

To ensure proper airtightness and/or wind sealing, stick the start and end of the CONTEGA IQ tape to each other using a strip of DUPLEX.

General conditions

The bonds should not be subjected to tensile strain.

Press firmly to secure the adhesive tapes in place. Ensure that there is sufficient resistance pressure. Windproof, airtight or rainproof bonding can only be achieved if this sealing tape is installed without folds, creases or joints. Ventilate continuously and systematically to prevent build-up of excessive humidity; use a dryer if necessary.

When plastering, please observe the recommendations of the plaster manufacturer for non-absorbent substrates. A bonding course may be necessary.

The information provided here is based on practical experience and the current state of knowledge. We reserve the right to make changes to the recommended designs and processing or to make alterations due to technical developments and associated improvements in the quality of our products. We would be happy to inform you of the current technical state of the art at the time you use our products.

Further information about the application and construction can be found in the pro clima planning documentation. For queries please call the pro clima technical hotline on +49 (0)6202 278245.

MOLL

bauökologische Produkte GmbH

Rheintalstraße 35 - 43

D-68723 Schwetzingen

Fon: +49 (0) 62 02 - 27 82.0

eMail: info@proclima.de